



YAMADA Seisakusyo Co., Ltd.

Company Profile

Location: 1006 Fujimi, Fujimi-machi, Suwa-gun Nagano-ken,
399-0211 Japan
Phone: +81-266-78-7765 Fax: +81-266-78-7805

Representative: Shoji Kasahara

Capital: 33 million yen

Founded: October 15, 1946

Established: December 8, 1959

Business Activities: Design, development, manufacturing and
sale of firefighting water discharge equipment

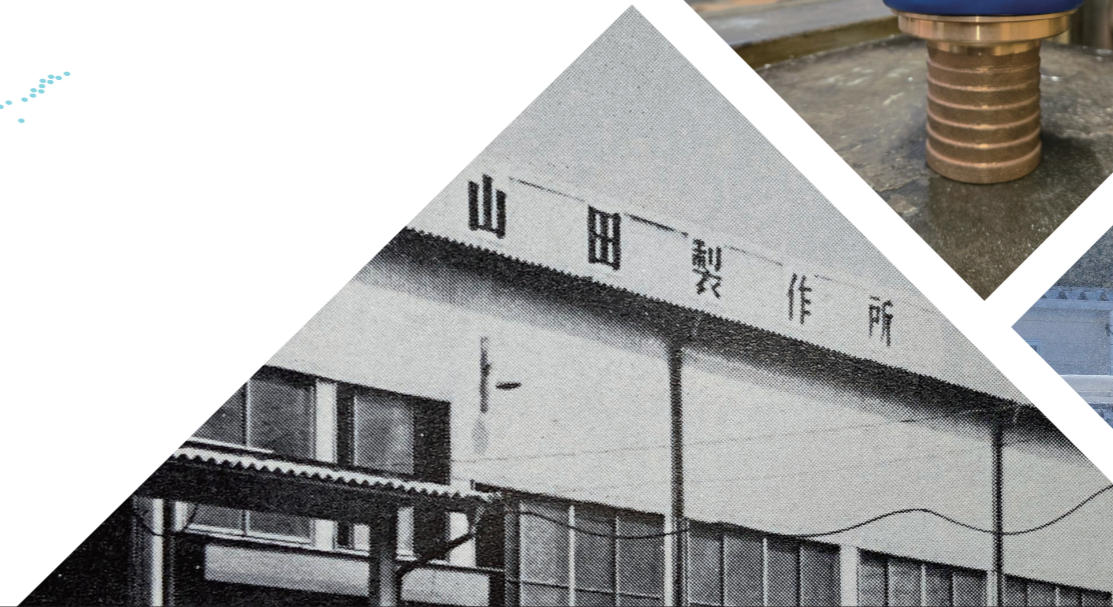
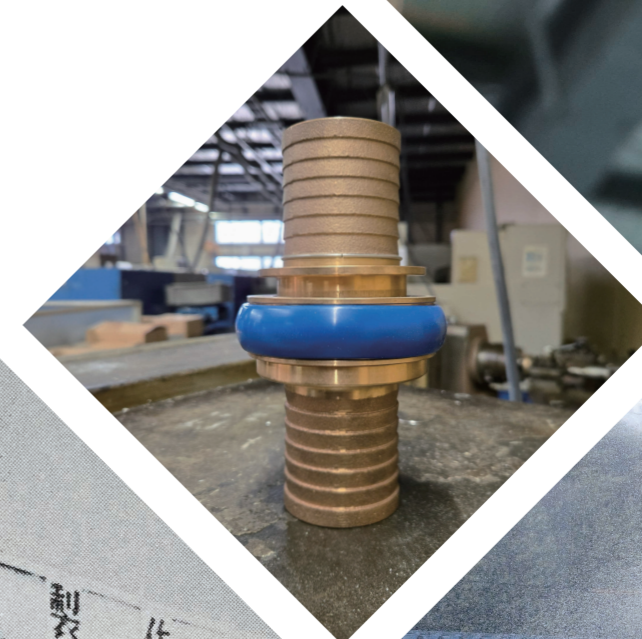
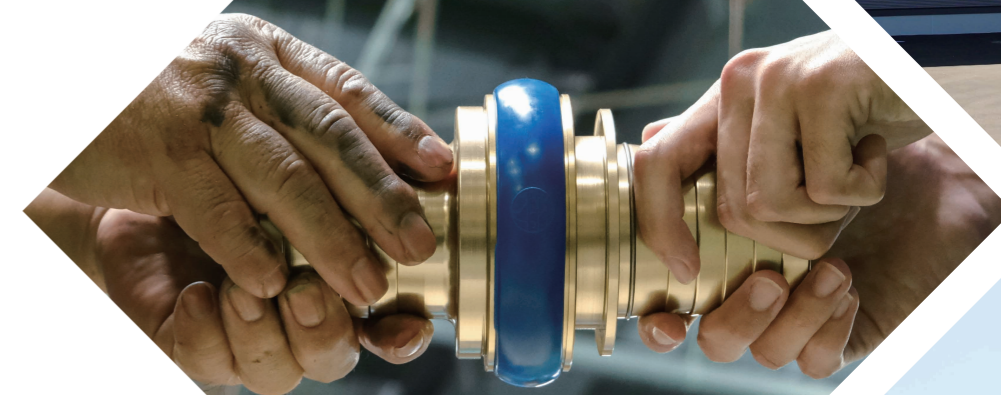


Website



YouTube

 YAMADA Seisakusyo Co., Ltd.



Safer, more Exciting

In every scene of the fire and under all conditions,
we manufacture couplings and fittings that ensure absolute safety-
protecting a future that is secure, resilient and exciting.

By honoring the craftsmanship and wisdom passed down from our predecessors,

we create products that spark inspiration,

fulfilling our enduring mission to protect the future.

Together, we are moving towards a future in which safer and more exciting

technologies are leveraged.

Indeed, this is the heart of our brand value: "Safer, more Exciting."



1. Specialized manufacturer focused exclusively on firefighting hardware

- ◆ Japan's top-tier shipment records
 - Couplings/Fittings production volume: 300,000 units in 2025
 - Market Share: 50%
- ◆ Operating since 1946, with over 80 years of proven performance



2. High Quality Supporting Safety and Security

- ◆ JFEII (Japan Fire Inspection Association) Type Approval
- ◆ FESC (Japan Fire Equipment Safety Center) Type Approval
- ◆ ISO 9001/14001 Certification



3. Design and Development Capabilities to Meet Needs & Seeds

- ◆ Those actively engaged in firefighting are involved in development
- ◆ High safety and operability, with a user-friendly shape
- ◆ SDGs: Environmentally conscious design



Product Portfolio

Fire Hose Couplings

Available in one-touch Machino-type and Screw-type (JPN/US/UK Std.).



◆ Shipment Records

Machino	25 – 100mm (1 – 4 inch)	R/Rc/PT	3/8 – 3 inch
Screw (JPN Std.)	25 – 150mm (1 – 6 inch)	NH/NHR/NPSH	3/8 – 3 inch
G/PF	1 – 2 1/2 inch	BS336	2 1/2 inch

Various Adapter Fittings

From a vast selection to bespoke adapters, get exactly what you need.



◆ Shipment Records

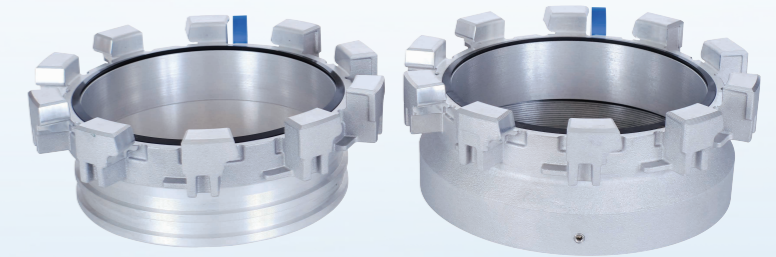
Machino	25 – 100mm (1 – 4 inch)	R/Rc/PT	3/8 – 3 inch
Screw (JPN Std.)	25 – 150mm (1 – 6 inch)	NH/NHR/NPSH	3/8 – 3 inch
G/PF	1 – 10 inch	BS336	2 1/2 inch

Fittings for High-Volume Water Supply & Drainage

Ensuring stable quality through our in-house 5-axis machining. Offering a full lineup including thread adapters and flanges.

◆ Shipment Records

Size	8 – 12 inch
------	-------------



Fire Nozzles Bodies and Tips

Employing the expansion processing, designed specifically to prevent any loosening over time.

◆ Shipment Records

Machino	40 – 65mm (1 1/2 – 2 1/2 inch)
Screw (JPN Std.)	50,65mm (2,2 1/2 inch)



Fire Department Connection & Intake Ports

Fire Department Connection and Intake Ports used in large facilities such as buildings, account for approximately 70% of the Japanese market.

◆ Shipment Records

Machino	65mm (2.5 inch)
Screw	65,75mm (2.5,3 inch)



Tobe-Lun ONE

Eye-catching Drone Firefighting System: Overcomes radiant heat and nozzle reaction force by integrating the features of our three mainstay units: *Nozu-Lun* (Nozzle Tip) and *Kuru-Lin* (Swivel Fittings)

Nozzle Tip *Nozu-Lun*

Maintains high-velocity straight discharge while forming an expansive water curtain to shield against radiant heat.



Swivel Fittings *Kuru-Lin*

Features 45° of free-moving flexibility in all directions, designed to eliminate hose twists as well as enable targeted and effective fire suppression.



◆ Measured value

Tip pressure	0.5MPa
Throw distance	21m
Flow rate	240L/min

Message from the President

YAMADA Seisakusyo has been developing, manufacturing, and selling firefighting equipment such as fire hose couplings and fittings for over 80 years since its founding in 1946.

We pursue our brand value of “Safer, more Exciting”, and operate with the mission to “protect precious lives and property by consistently maintaining high quality and providing firefighting equipment that can be operated safely and effectively during emergencies.”

The vision we aspire to embody, “Workshop of Couplings and Fittings Evolving from Past to Future,” carries the meaning of coupling the wisdom with techniques built up by our predecessors to the present and future. By creating safer couplings or products that couple hoses with hoses, we contribute to building a safe and secure society.

As “Workshop of Couplings and Fittings Evolving from Past to Future,” we will continue our efforts to contribute to the realization of a better society.



President Shoji Kasahara